

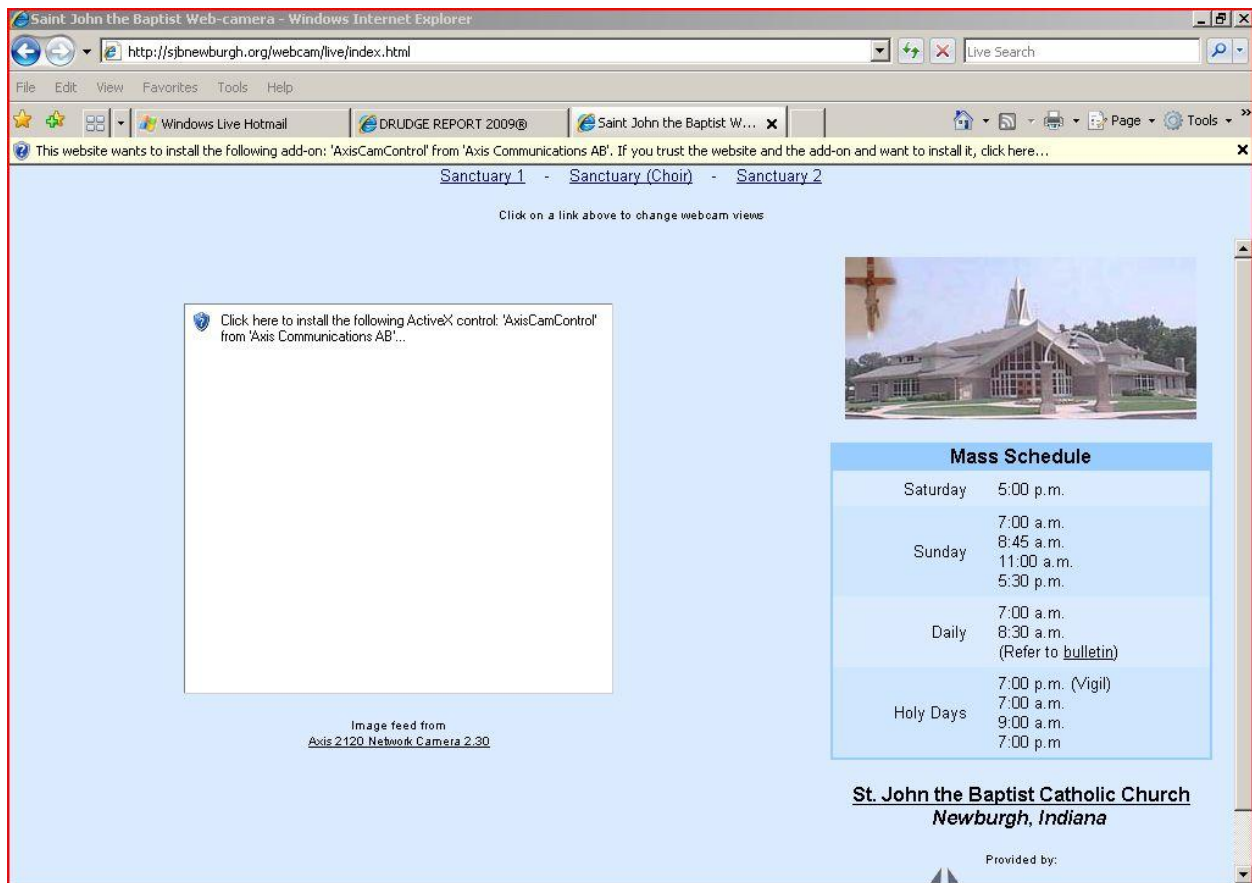
Instructions for viewing St. John webcams

The following instructions describe steps that are only required the first time the cameras are accessed. The installation procedure is very simple, you will probably not even need this tutorial.

Go to www.sjbnewburgh.org

Scroll down to the Webcams, click on “ **MORE INFO** “

After a pause, a yellow line will appear towards the top of the screen, click there and allow the **ACTIVE X** to run.



The screenshot shows a Windows Internet Explorer browser window with the address bar displaying <http://www.sjbnewburgh.org/webcam/live/index.html>. The browser's address bar and menu bar are visible. Below the browser window, a yellow security warning bar reads: "This website wants to install the following add-on: 'AxisCamControl' from 'Axis Communications AB'. If you trust the website and the add-on and want to install it, click here...".

The main content area of the website has a light blue background. At the top, there are links for "Sanctuary 1", "Sanctuary (Choir)", and "Sanctuary 2". Below these links is the text "Click on a link above to change webcam views".

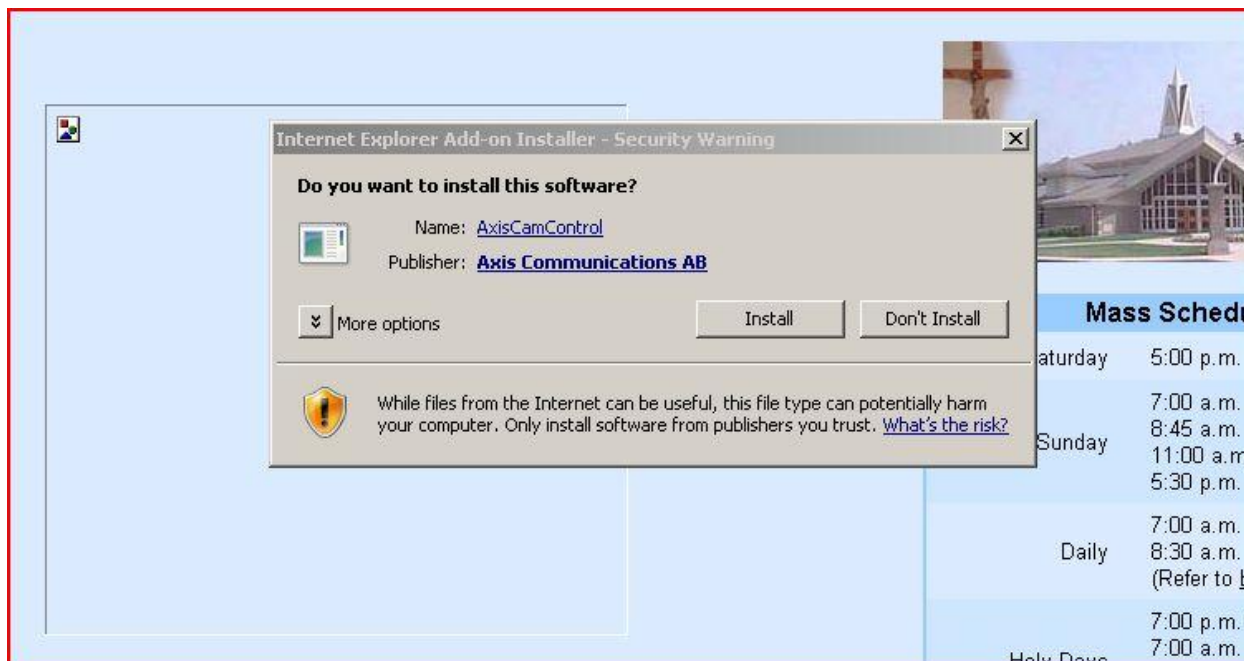
On the left side, there is a large white rectangular box with a blue border. Inside the box, it says "Click here to install the following ActiveX control: 'AxisCamControl' from 'Axis Communications AB'...". Below this box, the text "Image feed from Axis 2120 Network Camera 2.30" is visible.

On the right side, there is a photograph of the church building. Below the photograph is a "Mass Schedule" table.

Mass Schedule	
Saturday	5:00 p.m.
	7:00 a.m.
Sunday	8:45 a.m.
	11:00 a.m.
	5:30 p.m.
Daily	7:00 a.m.
	8:30 a.m.
	(Refer to bulletin)
Holy Days	7:00 p.m. (Vigil)
	7:00 a.m.
	9:00 a.m.
	7:00 p.m.

At the bottom of the page, the text "St. John the Baptist Catholic Church Newburgh, Indiana" is displayed, followed by "Provided by:" and a small logo.

Another box , or more ,depending on your version of Windows, will ask for permission to run/install the active X software needed to view the webcams. Allow this small SAFE plugin to install/run



In a moment the image from CAMERA ONE will appear. Please note the three views available by just clicking on each link.

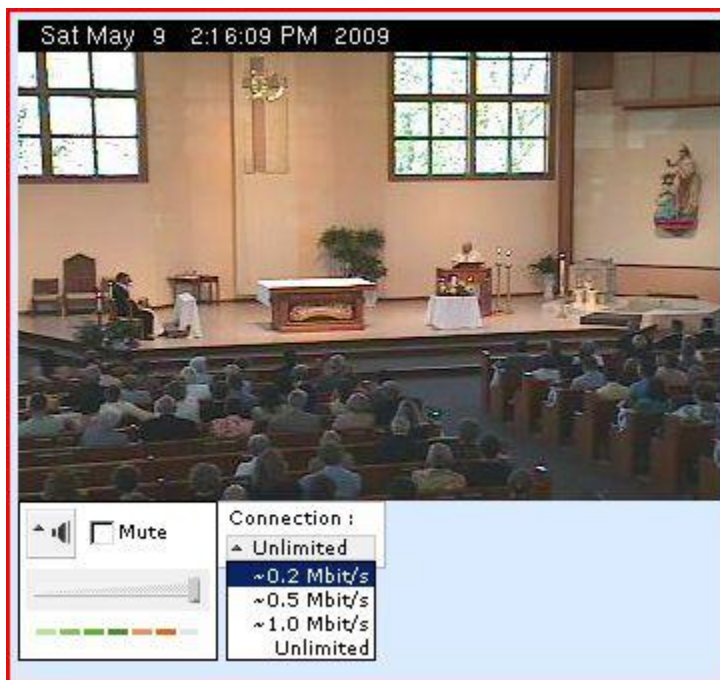
IMPORTANT—The camera marked as Sancturay (choir) will run through the install process again due to hardware differences.

***** SANCTUARY 1 and 2 have audio settings that must be changed to enjoy steady sound.

Note the small arrow next to the SPEAKER and CONNECTION boxes under the image.

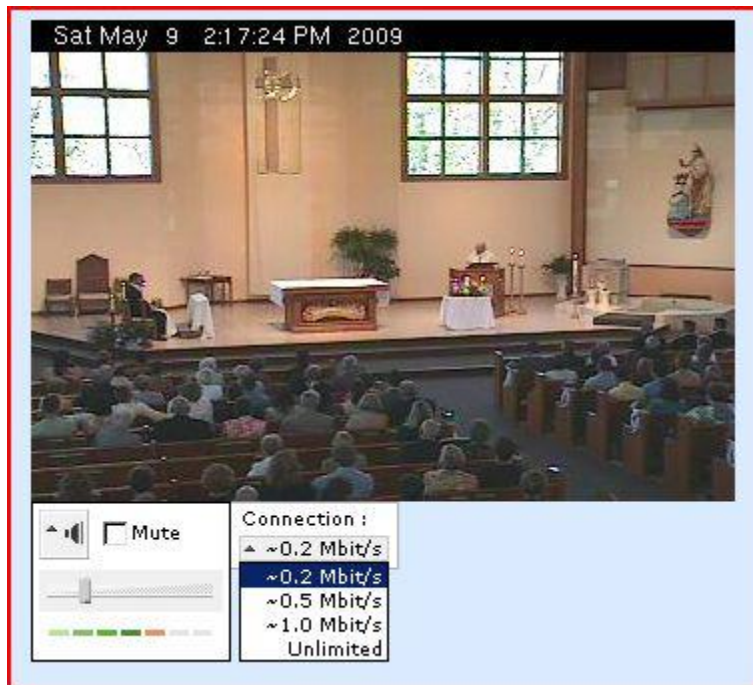


Clicking on those arrows will reveal adjustments we need to make



We need to change the CONNECTION from UNLIMITED to 0.2 Mbits

And lower the volume by sliding the bar with your mouse.



Clicking on the arrows again will close the options, leaving your new setting intact.



Now adjust your computer speakers as desired.